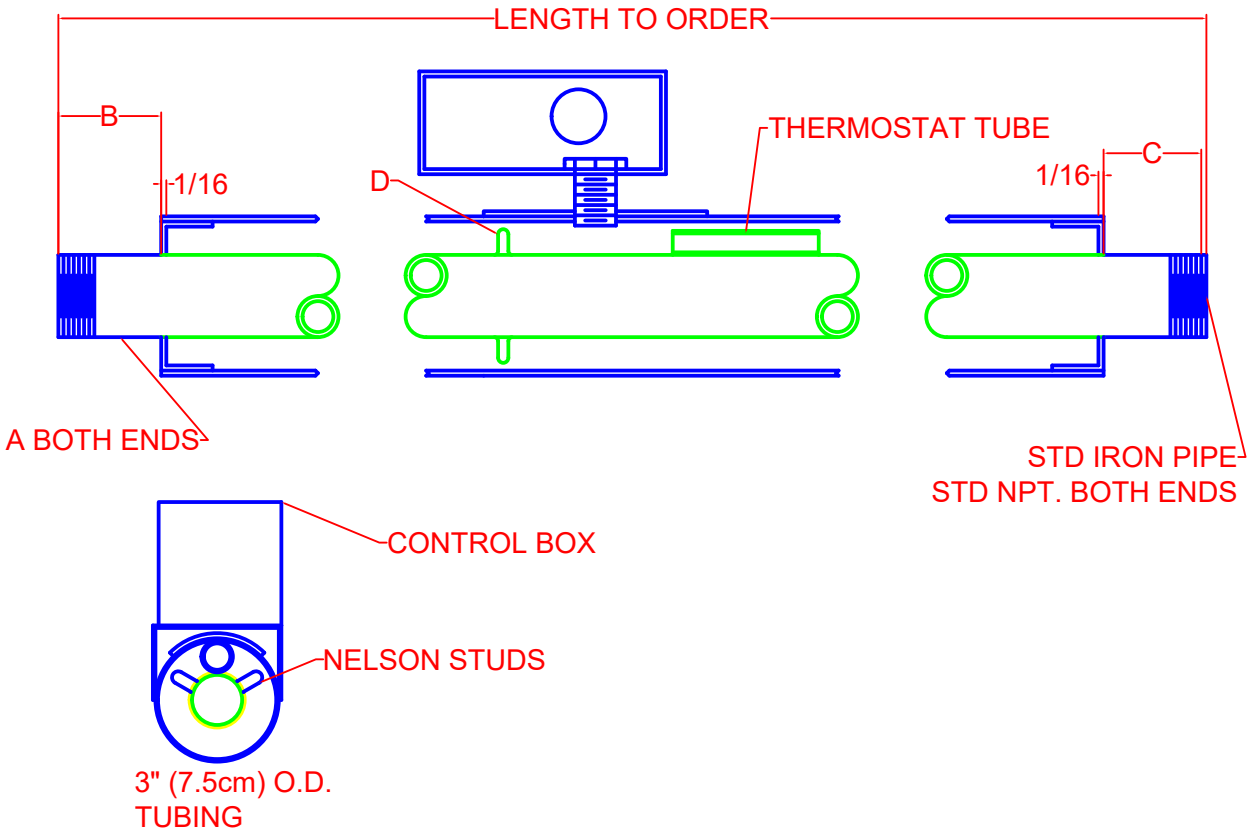


PIPE SIZE	A	B	C	D	WELDED STL TUBING SIZE
1/2 in	71A1202-103	1 1/8 in	2 in	1 in	3"O.D. X 16 GA
1.27 cm		2.85 cm	5.08 cm	2.54 cm	7.62 cm O.D. X 1.29 mm
3/4 in	71A1202-103	1 1/8 in	2 in	1 in	3"O.D. X 16 GA
1.90 cm		2.85 cm	5.08 cm	2.38 cm	7.62 cm O.D. X 1.29 mm
1 in	71A1202-102	1 in	1 in	13/16 in	4"O.D. X 16 GA
2.54 cm		2.54 cm	2.54 cm	2.06 cm	10.16 cm O.D. X 1.29 mm
1 1/4 in	71A1201-101	1 1/8 in	2 in	1 1/8 in	4"O.D. X 16 GA
3.17 cm		2.85 cm	5.08 cm	2.85 cm	10.16 cm O.D. X 1.29 mm
1 1/2 in	71A1202-102	1 1/8 in	2 in	1 in	4"O.D. X 16 GA
3.81 cm		2.85 cm	5.08 cm	2.54 cm	10.16 cm O.D. X 1.29 mm
2 in	71A1202-103	1 1/8 in	2 in	3/4 in	4"O.D. X 16 GA
5.08 cm		2.85 cm	5.08 cm	1.90 cm	10.16 cm O.D. X 1.29 mm



This drawing and all components within are the sole property of Sta-Warm Electric Company. No reproductions or copies of any kind are permissible without written consent from Sta-Warm Electric Company

Sta-Warm Electric Company  
Ravenna, Ohio 44266

### HEATED PIPE

SIZE A	DATE 6/1/17	DWG NO. 35B1325	REV 1
Order No.	SCALE NONE	DRAWN BY: T. Borthwick	SHEET 1 OF 1